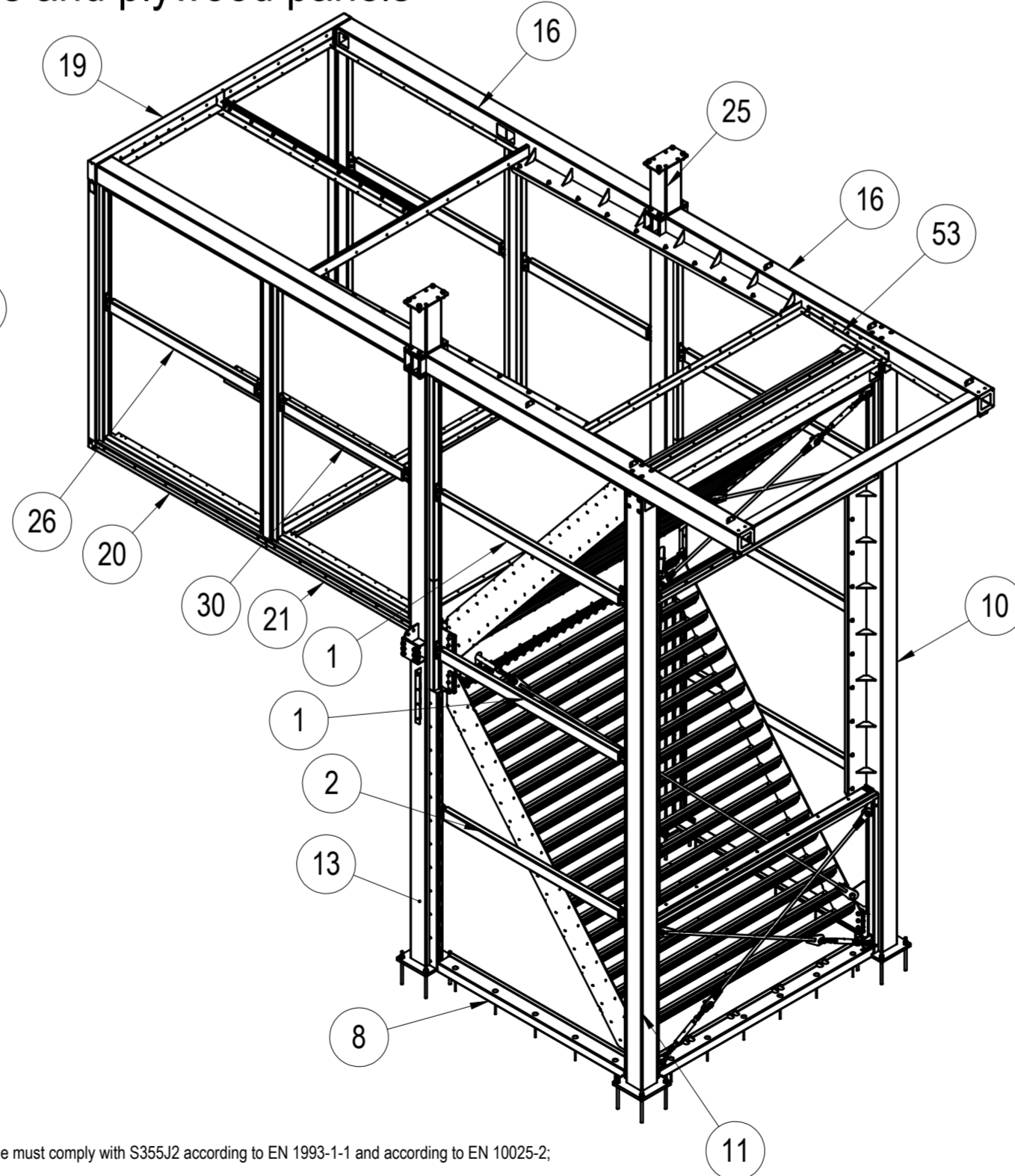
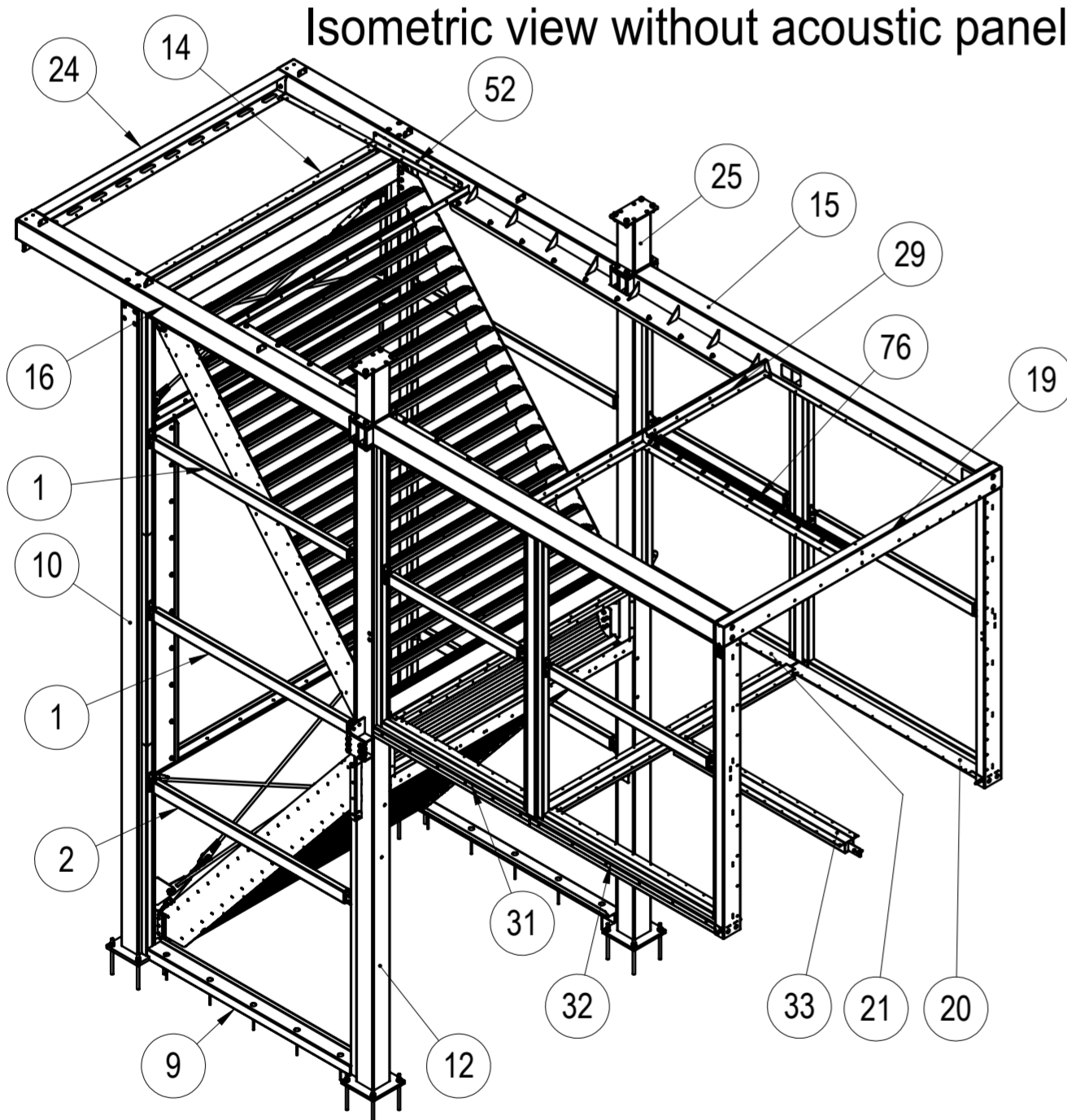


NO.	PART NO	DESCRIPTION	MATERIAL	PROCESSING	REVISION	WEIGHT	QTY
1	105-05013-00	Horizontal side beam long	-	WLD HDG		24.99	4
2	105-05014-00	Horizontal side beam short	-	WLD HDG		24.55	2
3	105-05019-00	Deflector link + tightening fork	-	ASY		21.77	2
4	105-05023-00	Safety net flange	-	WLD HDG		3.75	2
5	105-05025-00	Storm Deflector 1	-	WLD HDG		1177.97	1
6	105-05028-00	Storm Deflector 2	-	WLD HDG		1176.51	1
7	105-05029-00	Bottom rear beam	-	WLD HDG		28.84	1
8	105-05030-00	Bottom side beam 1	-	WLD HDG		26.16	1
9	105-05031-00	Bottom side beam 2	-	WLD HDG		26.16	1
10	105-06001-00	R3 column	-	WLD HDG		358.55	1
11	105-06002-00	R4 column	-	WLD HDG		358.55	1
12	105-06003-00	L3 column	-	WLD HDG		351.07	1
13	105-06004-00	L4 column	-	WLD HDG		351.14	1
14	105-06005-00	Horizontal top beam	-	WLD HDG		139.37	1
15	105-06006-00	Horizontal top side beam 1	-	WLD HDG		381.27	1
16	105-06007-00	Horizontal top side beam 2	-	WLD HDG		381.27	1
17	105-06008-00	Vertical beam fiberglass side	-	WLD HDG		82.70	1
18	105-06009-00	Vertical beam duct side	-	WLD HDG		82.77	1
19	105-06010-00	Interface crossbeam	-	WLD HDG		52.45	1
20	105-06011-00	Side crossmember long 1	-	WLD HDG		51.86	1
21	105-06012-00	Side crossmember short R	-	WLD HDG		43.47	1
22	105-06015-00	103-06 upper link + tightening fork	-	ASY		10.53	2
23	105-06016-00	103-06 lower Link + tightening fork	-	ASY		11.44	2
24	105-06017-00	Roof crossbar	-	WLD HDG		47.89	1
25	105-06018-00	Truss frame support	-	WLD HDG		34.37	2
26	105-06019-00	Horizontal extension beam long	-	WLD HDG		20.64	2

NO.	PART NO	DESCRIPTION	MATERIAL	PROCESSING	REVISION	WEIGHT	QTY
27	105-06020-00	Vertical extension support	-	WLD HDG		66.64	2
28	105-06021-00	Horizontal extension middle crossmember	-	WLD HDG		48.82	1
29	105-06022-00	Extension top plywood support	-	WLD HDG		23.38	1
30	105-06023-00	Horizontal extension beam short	-	WLD HDG		17.16	2
31	105-06024-00	Side crossmember short L	-	WLD HDG		43.47	1
32	105-06025-00	Side crossmember long 2	-	WLD HDG		51.86	1
33	105-06026-00	Extension bottom plywood support beam	-	WLD HDG		33.33	1
34	105-05000-04	Threaded block	1.0503 (C45)	LC HDG		1.16	8
35	105-05000-05	Deflector shimplate 2mm	DX51+Z275	LC		0.26	26
36	105-05000-06	Deflector shimplate 1.5mm	DX51+Z275	LC		0.19	8
37	105-05000-07	Deflector gap cover plate	DX51D+Z275	LC		13.21	1
38	105-05000-08	Plywood guard plate 1	DX51D+Z275	LCB		0.84	2
39	105-05000-09	Plywood guard plate 2	DX51D+Z275	LCB		0.94	1
40	105-05000-10	Acoustic panel corner guard	DX51D+Z275	LCB		1.28	2
41	105-05000-11	Truss frame shimplate	DX51D+Z275	LC		0.56	4
42	105-05000-73	Rear panel 4	Kingspan KS1150 AF 80mm	CND		41.93	1
43	105-05000-75	Side panel 1R	Kingspan KS1150 AF 80mm	CND		36.81	2
44	105-05000-76	Side panel 2R	Kingspan KS1150 AF 80mm	CND		37.65	2
45	105-05000-77	Side panel 3R	Kingspan KS1150 AF 80mm	CND		36.80	1
46	105-05000-79	Side panel 5R	Kingspan KS1150 AF 80mm	CND		37.63	1
47	105-05000-85	Side panel 5L	Kingspan KS1150 AF 80mm	CND		37.63	1
48	105-06000-01	Exhaust hatch bottom support plate	S355J2	LCB HDG		21.69	2
49	105-06000-02	Exit zone top support plate	S355J2	LCB HDG		36.16	2
50	105-06000-03	Rear exhaust hatch top support plate	S355J2	LCB HDG		15.01	2
51	105-06000-04	Floor plywood support plate	S355J2	LCB HDG		13.31	1
52	105-06000-05	Top plywood support plate R	S355J2	LCB HDG		5.10	1
53	105-06000-06	Top plywood support plate L	S355J2	LCB HDG		5.10	1

NO.	PART NO	DESCRIPTION	MATERIAL	PROCESSING	REVISION	WEIGHT	QTY
54	105-06000-07	Top plywood support plate front	S355J2	LCB HDG		14.54	1
55	105-06000-08	Front 103-06 plywood	Plywood Riga Form (laminated)	OTH		12.99	1
56	105-06000-09	Side 103-06 plywood 1	Plywood Riga Form (laminated)	OTH		27.92	2
57	105-06000-10	Rear 103-06 plywood 1	Plywood Riga Form (laminated)	OTH		41.64	1
58	105-06000-11	Rear 103-06 plywood 2	Plywood Riga Form (laminated)	OTH		26.64	1
59	105-06000-13	Roof 103-06 plywood 1	Plywood Riga Form (laminated)	OTH		25.24	1
60	105-06000-14	Side 103-06 plywood 4	Plywood Riga Form (laminated)	OTH		19.53	2
61	105-06000-15	Side panel 11	Kingspan KS1150 AF 80mm	CND		59.27	4
62	105-06000-16	Side panel 10	Kingspan KS1150 AF 80mm	CND		25.18	2
63	105-06000-18	Side 103-06 plywood 5	Plywood Riga Form (laminated)	OTH		22.83	2
64	105-06000-20	Roof 103-06 plywood 2	Plywood Riga Form (laminated)	OTH		26.51	1
65	105-06000-27	Side panel 7R	Kingspan KS1150 AF 80mm	CND		19.24	1
66	105-06000-30	Rear panel 8	Kingspan KS1150 AF 80mm	CND		17.06	1
67	105-06000-31	Rear panel 6	Kingspan KS1150 AF 80mm	CND		39.09	1
68	105-06000-32	E-stop flange	DX51D+Z275	LC		0.09	1
69	105-06000-33	Floor 103-06 plywood 1	Plywood Riga Form (laminated)	OTH		56.67	1
70	105-06000-34	E-stop hole cover plate	DX51D+Z275	LC		0.10	1
71	105-06000-35	Side 103-06 plywood 2	Plywood Riga Form (laminated)	OTH		37.15	5
72	105-06000-36	Side 103-06 plywood 3	Plywood Riga Form (laminated)	OTH		30.98	1
73	105-06000-37	Side 103-06 plywood 5	Plywood Riga Form (laminated)	OTH		27.05	2
74	105-06000-38	Side 103-06 plywood 6	Plywood Riga Form (laminated)	OTH		23.13	2
75	105-06000-39	Floor 103-06 plywood 2	Plywood Riga Form (laminated)	OTH		32.40	2
76	105-06000-40	U channel - unequal leg short	S355J2	CND HDG		17.67	2
77	105-06000-41	Roof 103-06 plywood 3	Plywood Riga Form (laminated)	OTH		29.15	2
78	105-06000-42	Side panel 7L	Kingspan KS1150 AF 80mm	CND		36.80	1
79	105-06000-43	Side panel 8L	Kingspan KS1150 AF 80mm	CND		37.05	1
80	105-06000-44	Side panel 9L	Kingspan KS1150 AF 80mm	CND		19.24	1
81	105-06000-45	Side panel 8R	Kingspan KS1150 AF 80mm	CND		28.00	1
82	3SU1051-1HB20-0AA0	E-stop (siemens)	-	COTS		0.36	1
83	3SU1900-0EX30-0AA0	E-stop collar	-	COTS		0.05	1
84	Blind rivet 4.0x6	Würth 0935 4 6	EZn	COTS		0.00	30
85	DIN 5299-C + screw	CERTEX Art.no. 11.565299D07	EZn	COTS		0.05	27
86	Loctite 243	Threadlocking adhesive medium strength 55ml	-	COTS		0.00	1
87	Wuerth_021966445	CSK wing type drilling screw	FlakeZn	COTS		0.01	800
88	Bossard_5403131	Bent eye bolt M6x60	EZn	COTS		0.02	27
89	DIN 571 d6x30	Hex head wood bolt	EZn	COTS		0.01	14
90	DIN 976-1 M10 8.8 HDG L=200	Metric thread stud bolt	HDG-8.8	COTS		0.12	16
91	DIN 976-1 M20 8.8 HDG L=350	Metric thread stud bolts	HDG-8.8	COTS		0.86	16
92	DIN 7504K ST6.3x25	Hex head self-drilling screw	EZn	COTS		0.01	58
93	DIN 7504K ST6.3x100	Hex head self-drilling screw	EZn	COTS		0.03	350
94	DIN7349 M12	Thick washer	HDG-HV200	COTS		0.03	80
95	ISO4014 (DIN931) M16x60	Hex bolt with shank	HDG-8.8	COTS		0.13	24
96	ISO4017 (DIN933) M6x20	Hex bolt	EZn-8.8	COTS		0.01	24
97	ISO4017 (DIN933) M10x30	Hex bolt	HDG-8.8	COTS		0.03	18
98	ISO4032 (DIN934) M6	Hex nut	EZn-8.8	COTS		0.00	78
99	ISO4032 (DIN934) M10	Hex nut	HDG-8	COTS		0.01	34
100	ISO4032 (DIN934) M12	Hex nut	HDG-8	COTS		0.02	8
101	ISO4032 (DIN934) M20	Hex nut	HDG-8	COTS		0.07	16
102	ISO7089 (DIN125) M6	Plain Washer	EZn-HV200	COTS		0.00	102
103	ISO7089 (DIN125) M10	Plain Washer	HDG-HV200	COTS		0.00	52
104	ISO7089 (DIN125) M12	Plain Washer	HDG-HV200	COTS		0.01	232
105	ISO7089 (DIN125) M16	Plain Washer	HDG-HV200	COTS		0.01	64
106	ISO7089 (DIN125) M20	Plain Washer	HDG-HV200	COTS		0.02	88
107	ISO7093 (DIN9021) M6	Large plain washer	HDG-HV200	COTS		0.00	14
108	ISO7380-1 M5x12	Hex socket button head screw	EZn-10.9	COTS		0.00	8
109	ISO10642 (DIN7991) M12x45	CSK socket screw	EZn-8.8	COTS		0.05	8
110	SB EN 15048-1 ISO4014 (DIN931) M12x45	SB Hex bolt with shank	HDG-8.8	COTS		0.06	44
111	SB EN 15048-1 ISO4017 (DIN933) M12x40	SB Hex bolt	HDG-8.8	COTS		0.05	108
112	SB EN 15048-1 ISO4017 (DIN933) M16x50	SB Hex bolt	HDG-8.8	COTS		0.12	20
113	SB EN 15048-1 ISO4017 (DIN933) M20x60	SB Hex bolt	HDG-8.8	COTS		0.22	20
114	SB EN 15048-1 ISO4017 (DIN933) M20x75	SB Hex bolt	HDG-8.8	COTS		0.26	16
115	SB EN 15048-1 ISO4032 (DIN934) M12	SB Hex nut	HDG-8	COTS		0.02	152
116	SB EN 15048-1 ISO4032 (DIN934) M16	SB Hex nut	HDG-8	COTS		0.04	20
117	SB EN 15048-1 ISO4032 (DIN934) M20	SB Hex nut	HDG-8	COTS		0.07	36
118	Scell-it_XPRO_2500ml	Vinyl ester resin for concrete	-	COTS		0.00	1
119	Wood screw d5x20	SPAX Flange head Cross Z2	EZn	COTS		0.00	174
120	Wood screw d5x25	SPAX Flange head Cross Z2	EZn	COTS		0.00	97



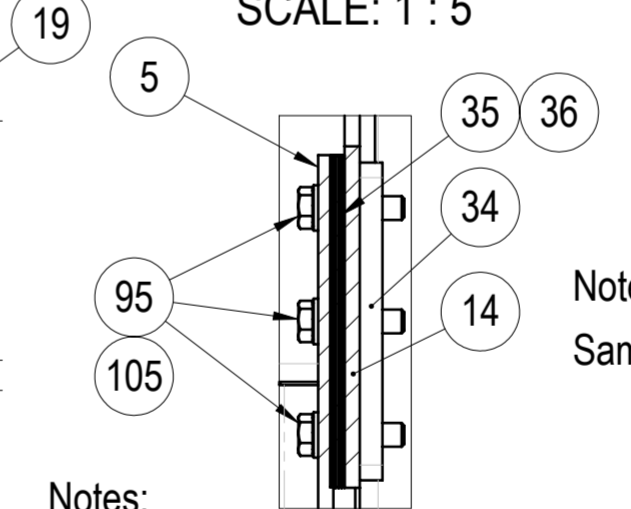
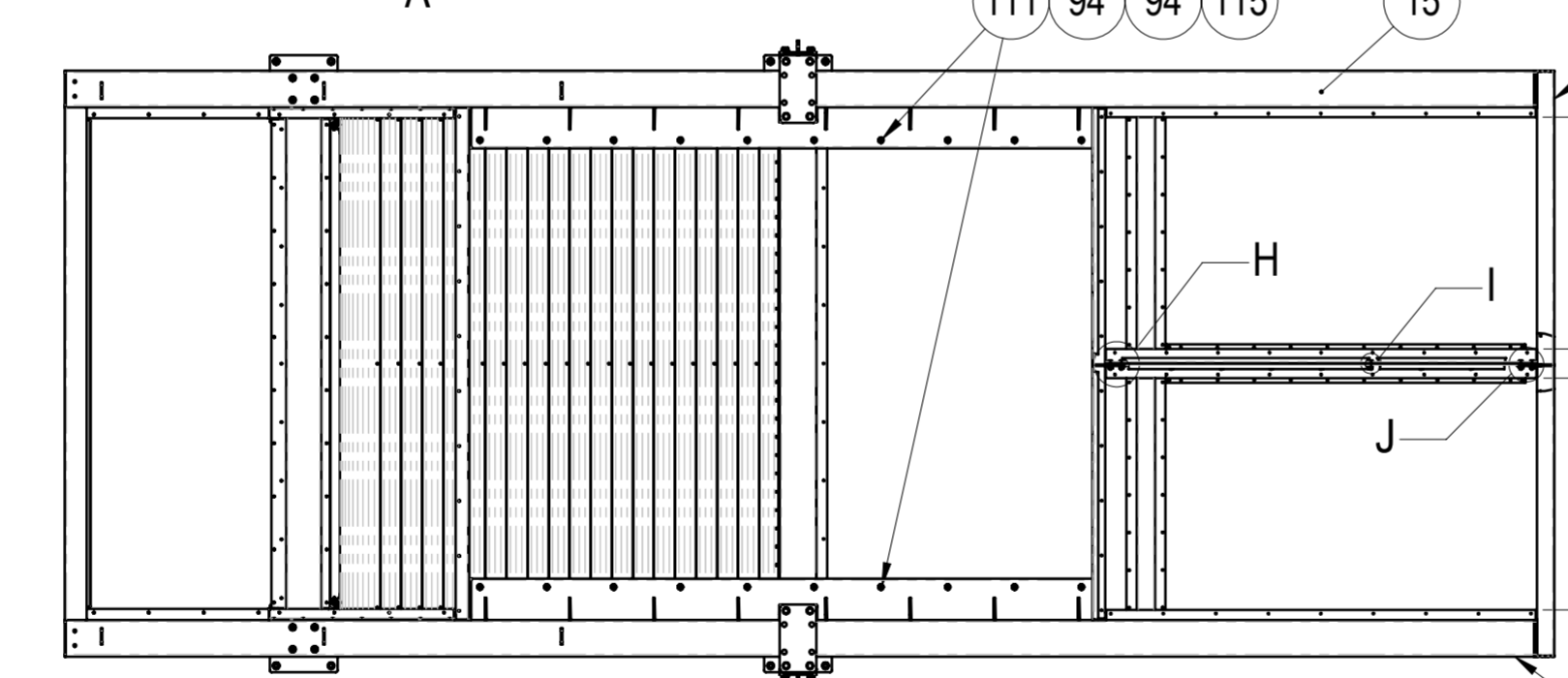
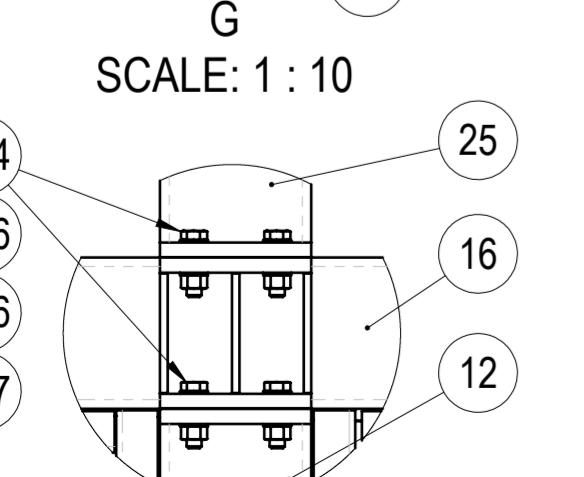
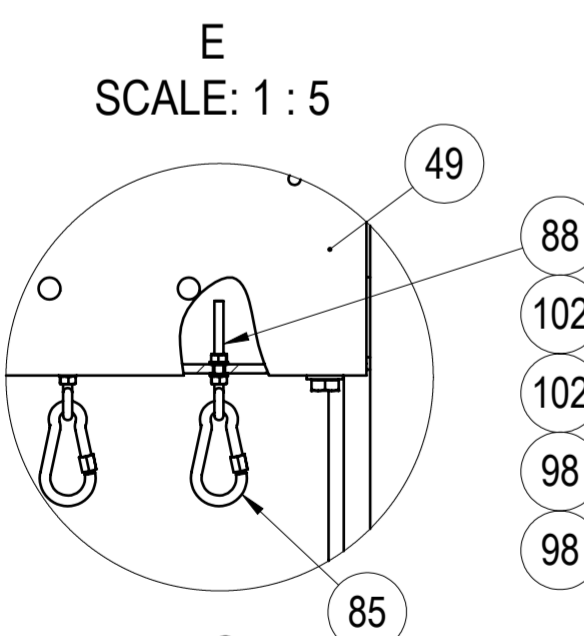
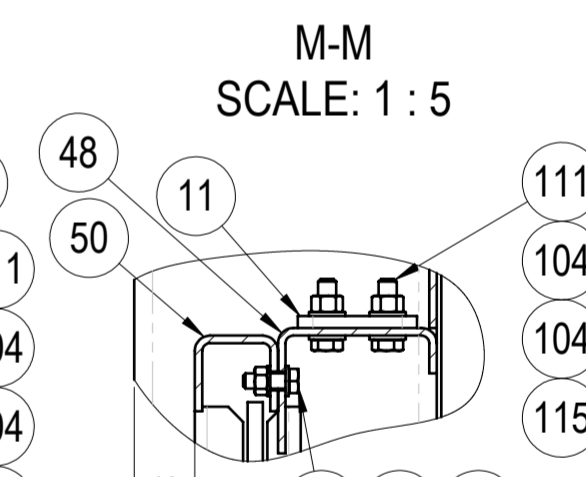
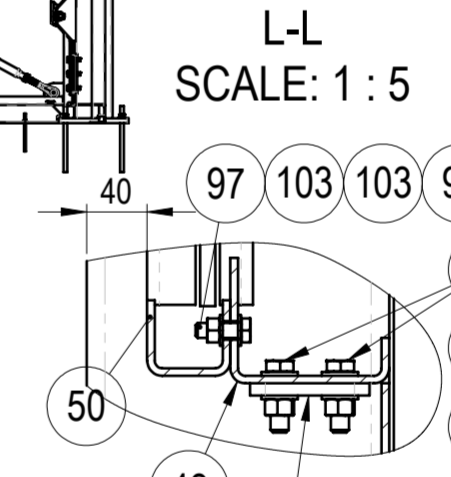
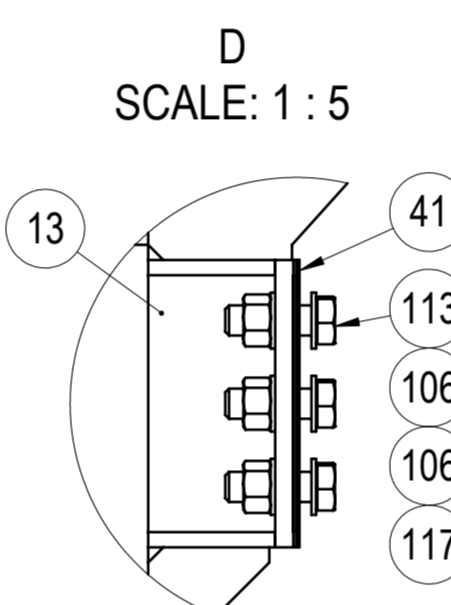
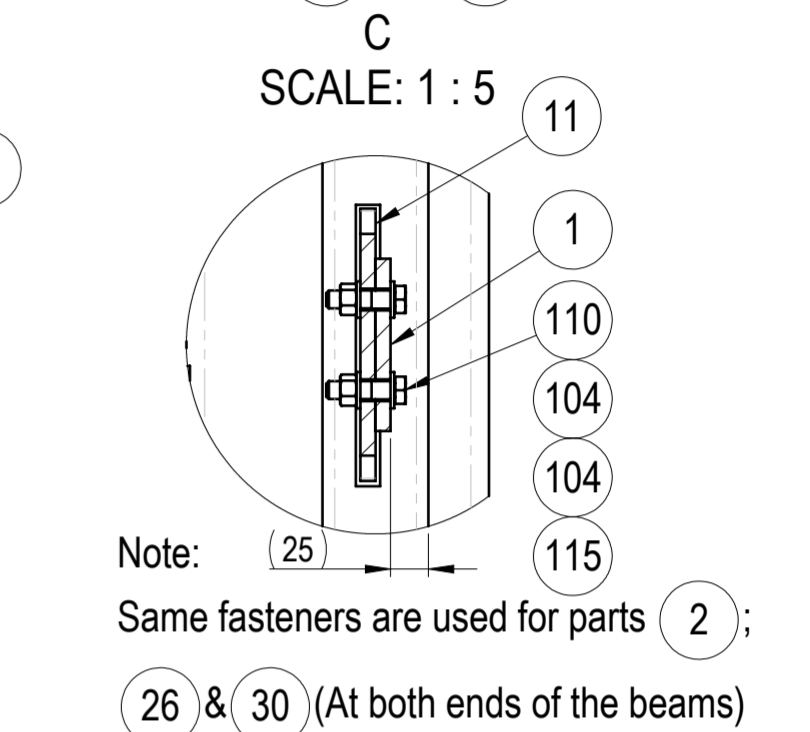
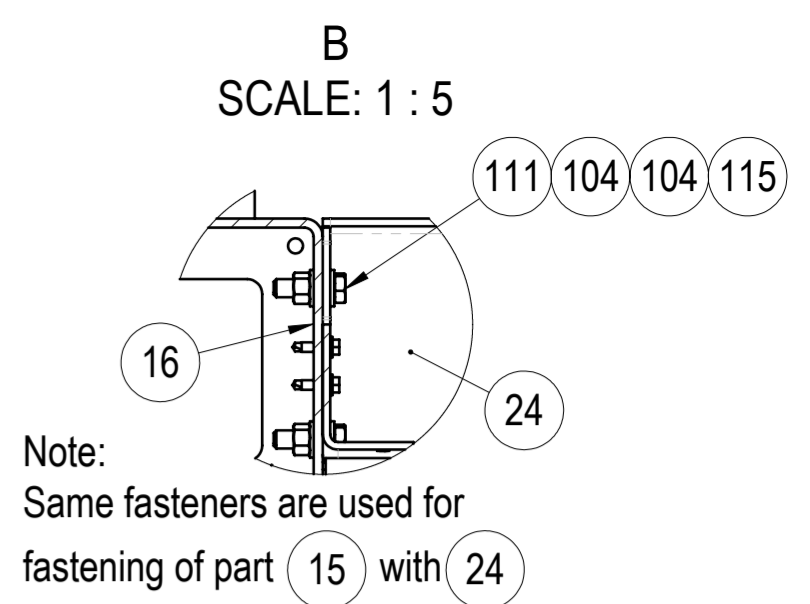
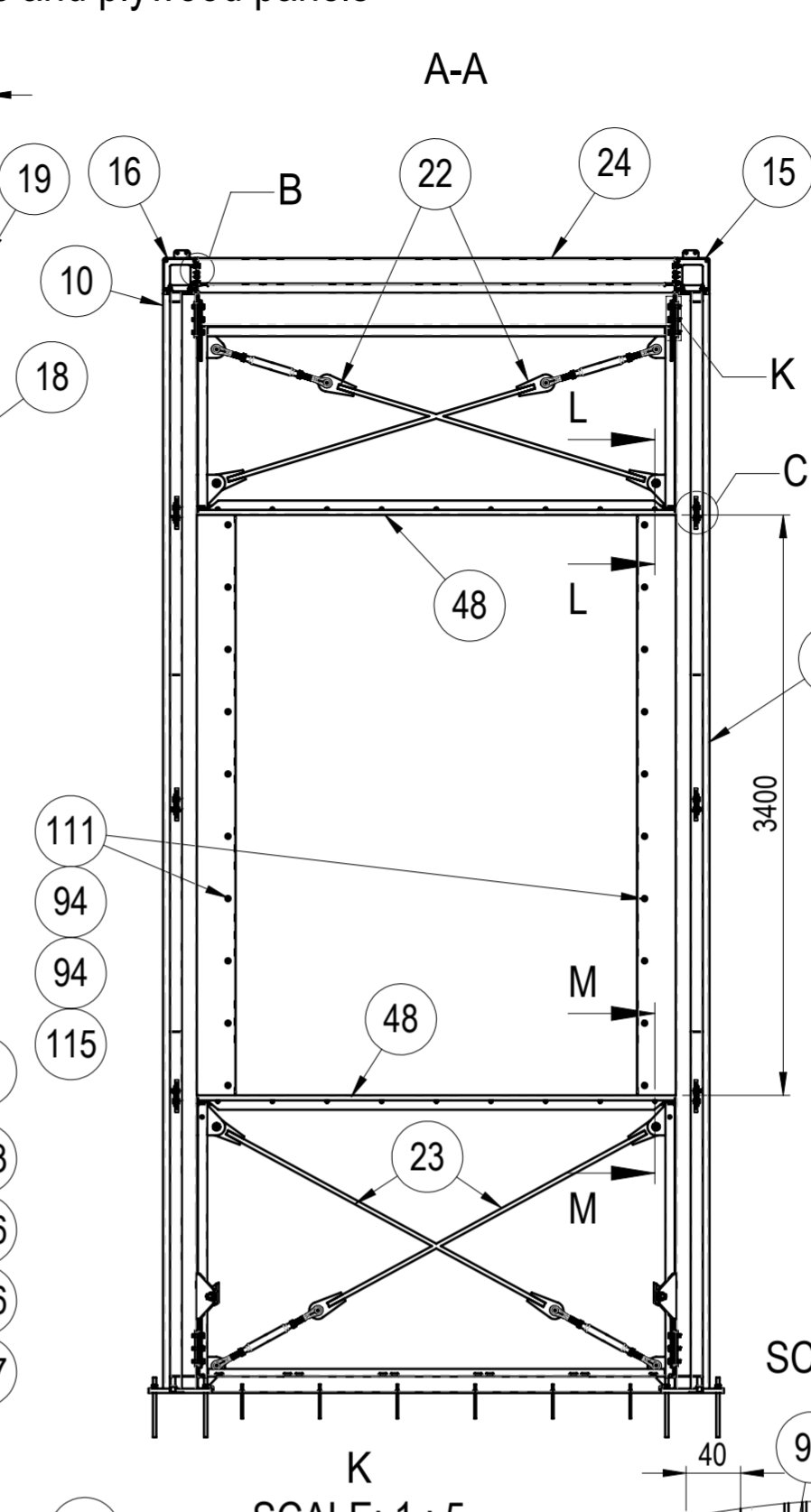
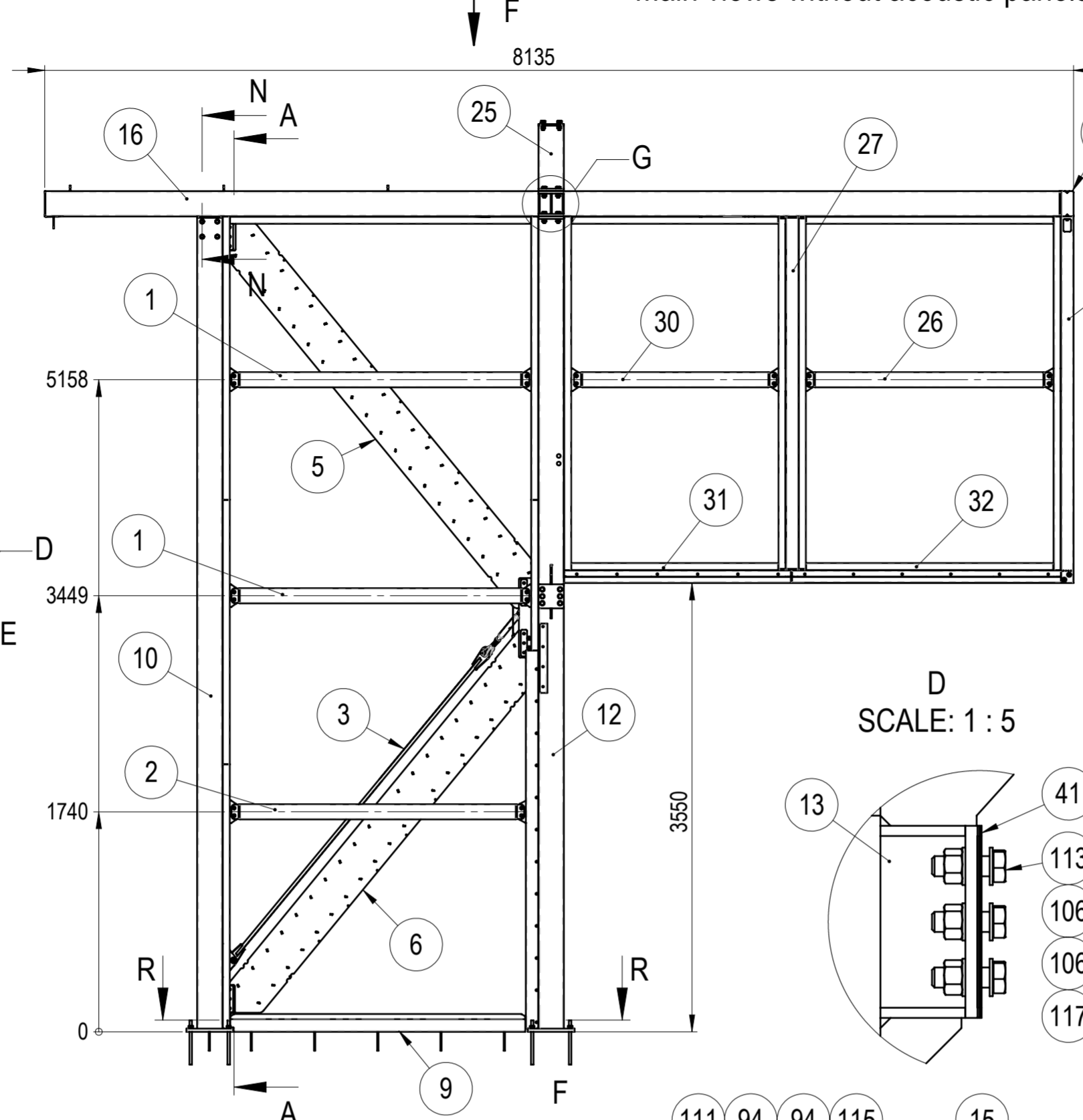
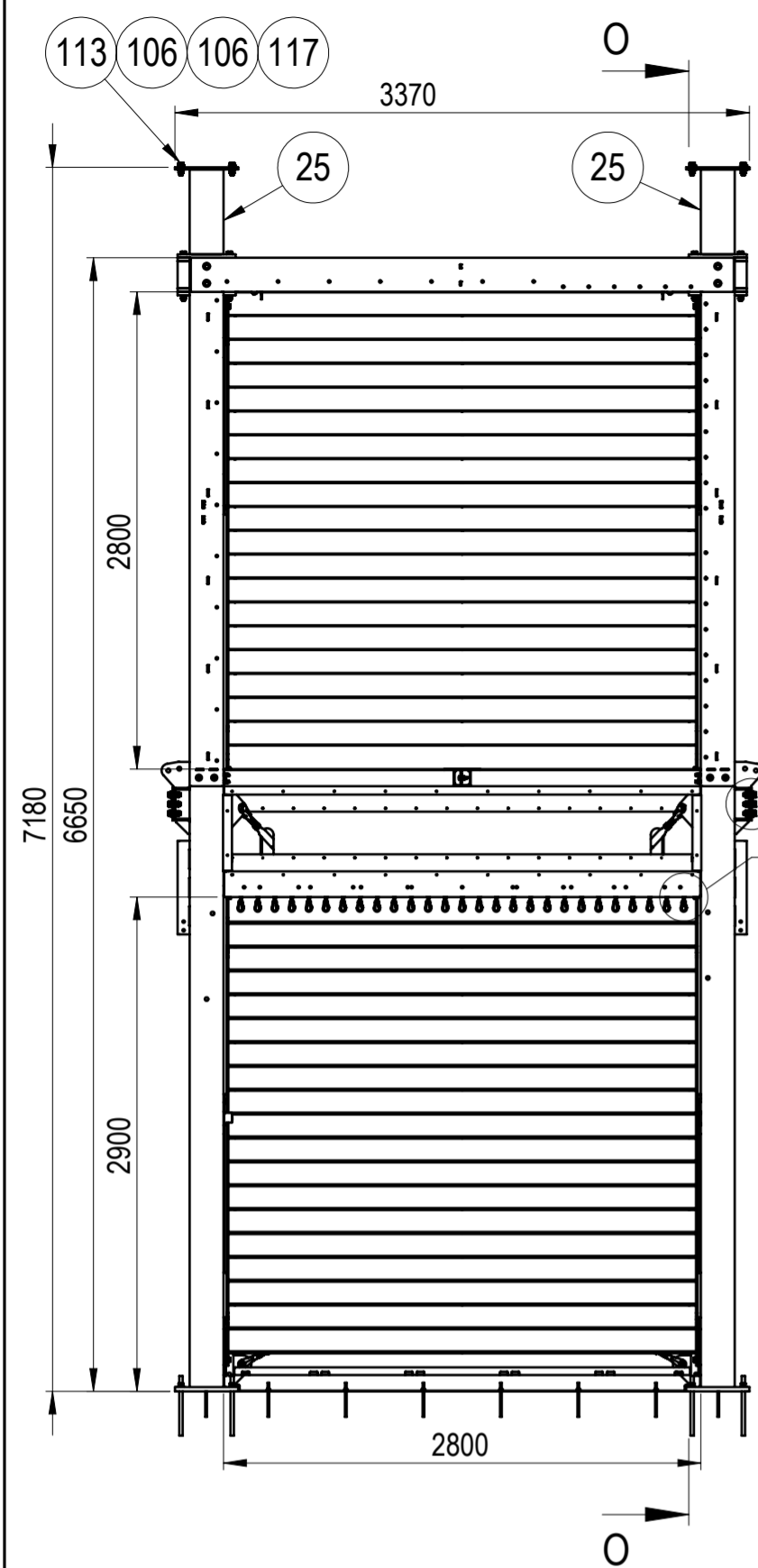
All structures shall be manufactured industrially in an appropriately certified company in compliance with: LVS EN 1090: 1;
 - Welding of steel structures in accordance with LVS EN 1011 and LVS EN 3834 standards;
 Conformity of production must be certified in accordance with LVS EN 45014;
 - Construction production category PC2, execution class EXC2;
 - Welding of structures at the factory shall be performed according to the welding procedure developed by the manufacturer specifications. The welds of the welded joints shall be formed along the contact length of elements, assuming that the thickness of the corner seam (leg length) cannot exceed $a = 0.85 (z = 1.2)$ of the thickness of the thinnest element (unless otherwise indicated in the drawings);
 - Butt welds must have 100% penetration.

- The steel grade must comply with S355J2 according to EN 1993-1-1 and according to EN 10025-2;
 - Geometry of IPE profiles according to EN 19-57;
 - Geometry of HEA profiles according to EN 53-62;
 - U-profile geometry according to EN 10279;
 - Geometry of RHS pipe profiles according to EN 10219-2;
 - Geometry of SHS pipe profiles according to EN 10219-2;
 - Sheets according to EN 10029.

-For all metric thread fasteners, use Loctite 243 threadlocker on final assembly.

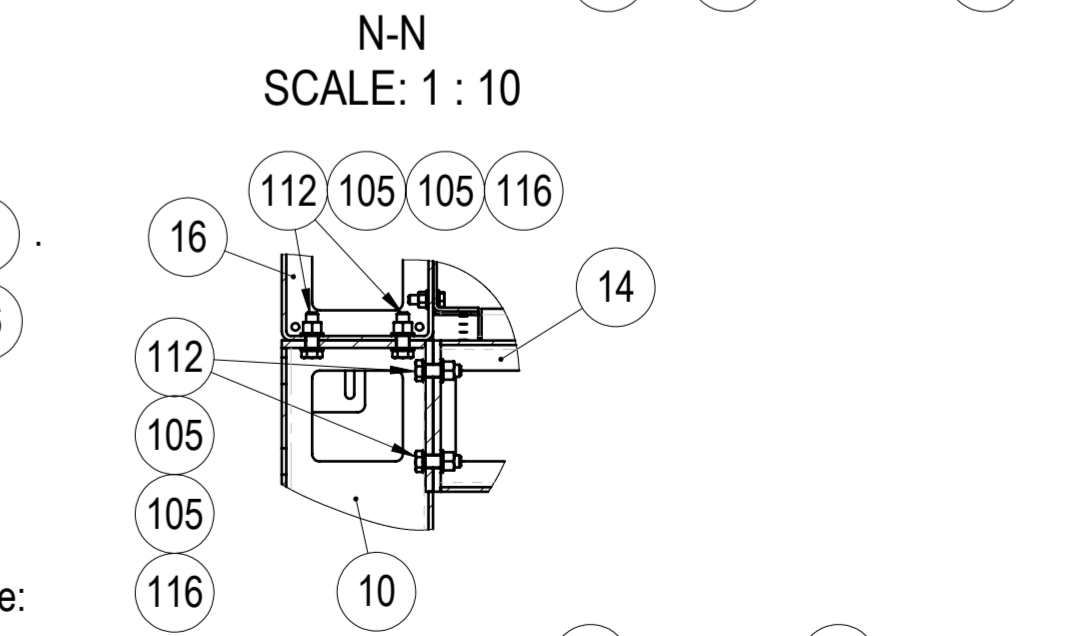
WEMPS ENGINEERING SERVICES	MATERIAL	WEIGHT	DEBURR AND BREAK SHARP EDGES	REVISION	DATE
	SURFACE PROTECTION	MACHINING	DO NOT SCALE DRAWING		18.07.2025
		ISO 2768 mK	ISO 9013 441	WELDING	SCALE
				ISO 13920 BF	FORMAT
NAME	SIGNATURE	PART NO.	105-06000-00		
Designed by	D. Dislers		Right turning channel		
Drawn by	D. Dislers		SHEET 1/5		
Technical ref					

Main views without acoustic panels and plywood panels

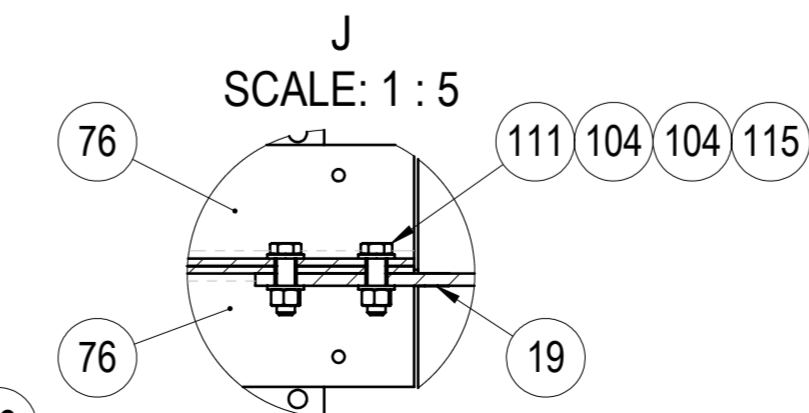
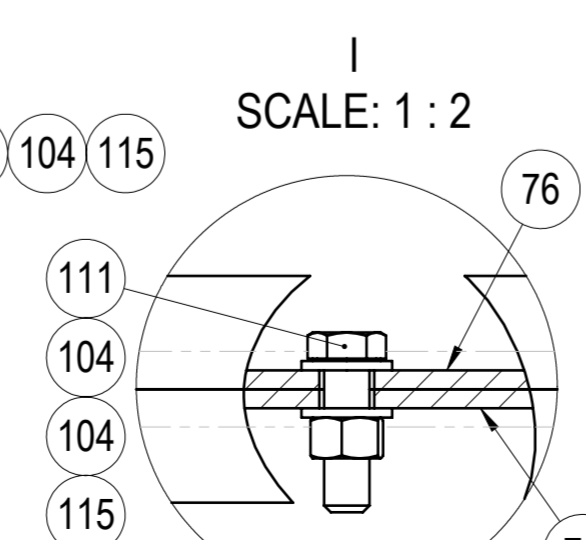
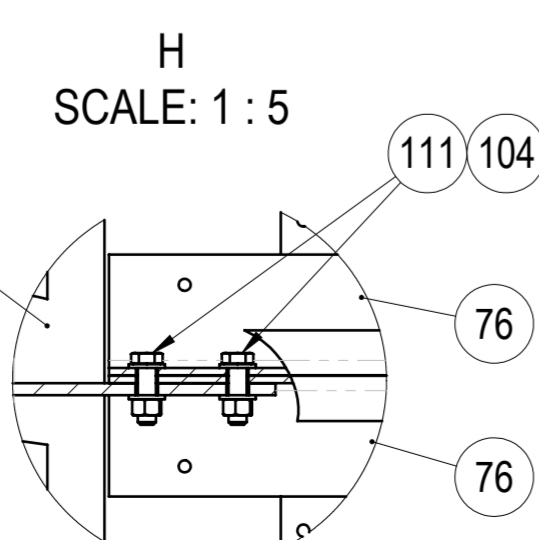


Note: Same fasteners are used to fasten parts 48 & 50 to column 10.

Notes:
1. Same fasteners are used on opposite side and for part 6.
2. Deflector shimplates 35 & 36 must be used if necessary.



Note: Same fasteners are used to fasten part 15 to column 11.



Note: Same fasteners are used for fastening of part 15 & 13

WEMPS ENGINEERING SERVICES		MATERIAL	WEIGHT	DEBURR AND BREAK SHARP EDGES	REVISION	DATE
		-	7712.010 Kg	DO NOT SCALE DRAWING		18.07.2025
		SURFACE PROTECTION	MACHINING	THERMAL CUTTING	WELDING	SCALE
		-	ISO 2768 mK	ISO 9013 441	ISO 13920 BF	1:40
		NAME	SIGNATURE	PART NO.	FORMAT	
Designed by D. Dislers				105-06000-00	A2	
Drawn by D. Dislers				DESCRIPTION	SHEET 2/5	
Technical ref.				Right turning channel		

